

MAJLIS PERBANDARAN KUBANG PASU, KEDAH
PROJECT BRIEF

NO. SEBUTHARGA : MPKP/SH(K)/12/2026

BERTARIKH 17 MEI 2026

BUTIRAN TAWARAN :

Sebut harga bagi kerja-kerja Membekal, Memasang, Mentaulliah Perkakasan Skrin Dan Peralatan Di Bilik Kawalan Bandar Pintar, Pembangunan Smart Pole Serta Pemasangan CCTV Di Sekitar Kawasan Daerah Kubang Pasu, MP Kubang Pasu

LOKASI :

Majlis Perbandaran Kubang Pasu, 06000, Jitra, Kedah. (N6.300384, E100.421843)

KOMPONEN / SKOP KERJA :

KERJA-KERJA MEMBEKAL, MEMASANG, MENTAULIAH PERKAKASAN SKRIN DAN PERALATAN DI BILIK KAWALAN BANDAR PINTAR, PEMBANGUNAN SMART POLE SERTA PEMASANGAN CCTV DI SEKITAR KAWASAN DAERAH KUBANG PASU, MP KUBANG PASU

BAHAGIAN A

1.1 Kerja-kerja permulaan : Menyediakan laporan yang dibukukan dalam saiz A4 untuk laporan projek.

BAHAGIAN B

2.1 PAPARAN LED SKRIN

2.1.1 Panel Video Wall 55" Inch FHD Video Wall Display Unit

- Extreme Narrow Bezel Videowall Panel
- Display Size: 55"
- Display Type: D-LED
- Display Resolution: 1920 x 1080 pixels (Full HD)
- Display Brightness: 500 nits
- Display Colour: 1.07B (10bit)
- Bezel-to-bezel: 3.5mm
- Contrast Ratio: 4000:1
- Response Time: 8ms
- Pixel Pitch: 0.63mm*0.63mm
- Bracket 55' Video Wall
- Wall mount push bracket / stand pool Cabinet

2.1.2 Encoder Videowall 12 CH

- 12-in-12-outputs Video wall processor
- 15 meter HDMI Fiber optic cable
- Video wall processor to Video wall display

2.1.3 Intelligent Video Surveillance Server

- HIKVISOIN IDS-9664NXI-M16/X
- Up to 2-ch@32 MP/2-ch@24 MP/4-ch@12 MP/8-ch@8 MP/16-ch@4 MP/32-ch@1080p decoding capacity
- H.265+/H.265/H.264+/H.264 video formats
- Up to 64-ch IP cameras can be connected

MAJLIS PERBANDARAN KUBANG PASU, KEDAH
PROJECT BRIEF

NO. SEBUTHARGA : MPKP/SH(K)/12/2026

BERTARIKH 17 MEI 2026

- Intelligent analytics based on deep learning algorithm
- Up to 24-ch perimeter protection
- Up to 16-ch facial recognition for video stream, or up to 48-ch facial recognition for face picture
- Up to 12-ch video structuralization
- Up to 8-ch IP speakers can be connected
- Storage : 8TB HDD

2.1.4 Work Station PC/Server

- Intel Core Ultra 7 265 (30 MB cache, 20 cores, 20 threads, 1.8 GHz to 5.3 GHz, 65W)
- 16GB, 1x16GB, DDR5, 5600MHz, UDIMM Non-ECC
- 1TB SSD TLC M.2 2280 PCIe Gen4
- NVIDIA A1000, 8GB GDDR6
- Windows 11 Pro, English

2.1.5 Display Monitor With Touchscreen 23" Inch

- Monitor (Touch)
- 23.6"
- 1920 x 1080 (F/HD)
- 75Hz
- 2Wx2
- 100x100
- HDMI & USB
- 10-point Optical Touch Display/IR Touch

2.2 PENDAWAIAN ELEKTRIK DAN INTERNET

2.2.1 Kerja Pendawaian Hdmi, Kabel Eletrik dan Pemasangan Bracket Video Wall.

K. Warranty

- 8x5xnbnd Maintenance Support
- Phone & Email, remote support
- Onsite troubleshooting
- 1 Year Warranty
- Cover for device above
- Maximum onsite 4 times per year
- Preventive Maintenance Half yearly
- Exclusion for Maintenance support
- Preventive Maintenance
- Loaner unit/Sparing unit
- On-site software upgrade due to End of Life
- All cost to upgrade/purchase additional licenses, hardware upgrade, hardware addon and/or total hardware change in order to execute - bug fixes, security vulnerabilities that affect the system

MAJLIS PERBANDARAN KUBANG PASU, KEDAH
PROJECT BRIEF

NO. SEBUTHARGA : MPKP/SH(K)/12/2026

BERTARIKH 17 MEI 2026

2.3 KAMERA LITAR TERTUTUP (CCTV)

2.3.1 Membekal dan memasang **Outdoor CCTV Solar System with Smart Pole** termasuk kelengkapan pemasangan atau setaraf dengannya mengikut spesifikasi dan kelulusan pegawai penguasa/wakil seperti berikut :

a) Camera

- i. Model Hikvision DS-2SE7C432IWG-K/4G/14(F0)
- ii. Solar-powered Security Network Speed Dome Kit
- iii. Camera (PTZ & Bullet)
- iv. 7-inch / 1/1.8" CMOS
- v. 2560 x 1440 (4 MP)
- vi. 32x Optical Zoom & 16x Digital Zoom
- vii. 80W Solar Panel & 360 WH Battery
- viii. IP67 & IK10 Protection
- ix. 4G, RJ45 Ethernet & Micro SD (Up to 256 GB)
- x. ColorVu / 200 m IR / Smart Tracking
- xi. *Testing functional of camera*

b) Audio System

Kerja – kerja membekal dan memasang **Audio System** mengikut spesifikasi dan kelulusan pegawai penguasa/wakil seperti berikut :

- i. 30W Passive Horn Speaker
- ii. Max SPL: 120 dB (250 Hz - 8 kHz)
- iii. High-Performance Mic (12VDC)
- iv. IP65 Aluminum Housing
- v. *Testing functional of audio system*

c) Panic Button/ Intercom

Membekal dan memasang **Panic Button / Intercom** :-

- i. 2MP Camera (Low Illumination & Night Vision)
- ii. Aluminum Panel
- iii. SOS Emergency Calling & Button Alarm
- iv. Voice Broadcast - PoE+
- v. *Testing functional of panic button / intercom*

d) Smart Pole

- i. 6m Height (114mm Diameter, 23mm Thickness)
- ii. Galvanized Steel with Epoxy Powder Coating
- iii. Brackets Included (Camera, Speaker, Solar Panel)
- iv. Flat Round Base size 500mm (L) x 500mm (W) x 5mm (Thickness) with footing size 900mm (W) x 900mm (L) x 700mm (H) Underground Footing Bracket
- v. *Testing functional of smart pole*

MAJLIS PERBANDARAN KUBANG PASU, KEDAH
PROJECT BRIEF

NO. SEBUTHARGA : MPKP/SH(K)/12/2026

BERTARIKH 17 MEI 2026

e) Control Panel & Network

- i. Anti-Corrosive Metal Panel (Includes 2-Pole MCB, 10A DC Connector, Ventilation Fan, Padlock)
- ii. Industrial 4G/5G Router(Public AP Wifi)
- iii. 12-Month SIM Card Subscription (1 Fixed IP)

2.4 Membekal dan memasang **Outdoor CCTV Solar System** atau setaraf dengannya mengikut spesifikasi dan kelulusan pegawai penguasa/wakil seperti berikut :

- i. Model Hikvision DS-2SE7C432IWG-K/4G/14(F0)
- ii. Solar-powered Security Network Speed Dome Kit
- iii. Camera (PTZ & Bullet)
- iv. 7-inch / 1/1.8" CMOS
- v. 2560 x 1440 (4 MP)
- vi. 32x Optical Zoom & 16x Digital Zoom
- vii. 80W Solar Panel & 360 WH Battery
- viii. IP67 & IK10 Protection
- ix. 4G, RJ45 Ethernet & Micro SD (Up to 256 GB)
- x. ColorVu / 200 m IR / Smart Tracking
- xi. *Testing functional of outdoor CCTV Solar System*

BAHAGIAN C

3.1 NETWORK AND SOFTWARE

3.1.1 Cable Network CAT6 dari Work Station ke Server Room :

- i. Cat6 cable with PVC piping
- ii. HDMI Extender 164ft Over Ethernet Cat5E/6
- iii. Adapter Repeater RJ45 Ethernet Socket Connector HDMI Sender Transmitter Receiver 1080p
- iv. Testing functional of Cable Network CAT6 dari Work Station ke Server Room.

3.1.2 Software Integrated Centralized Control Mapping :

- i. Map Interface Design. Design an interactive digital map interface suitable for command centre operations
- ii. Develop a user-friendly layout with clear visualization of map elements, operational layers, and essential controls.
- iii. Develop a user-friendly layout with clear visualization of map elements, operational layers, and essential controls.
- iv. Interface supports desktop or command-centre screen usage for live monitoring and decision making.
- v. *Testing functional of Software Integrated Centralized Control Mapping*

MAJLIS PERBANDARAN KUBANG PASU, KEDAH
PROJECT BRIEF

NO. SEBUTHARGA : MPKP/SH(K)/12/2026

BERTARIKH 17 MEI 2026

MAP INTERFACE DESIGN FOR COMMAND CENTRE OPERATION

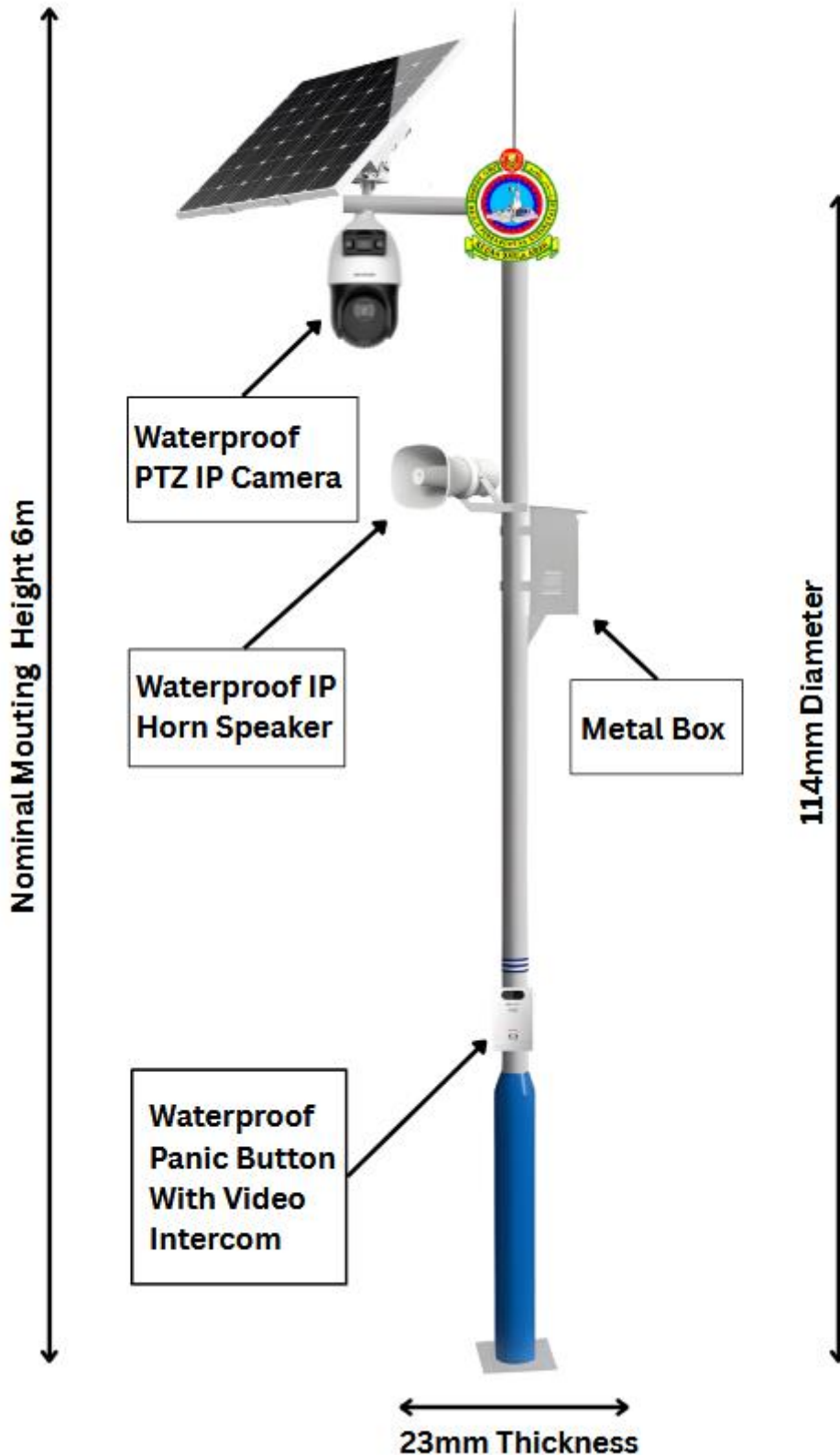


MAJLIS PERBANDARAN KUBANG PASU, KEDAH
PROJECT BRIEF

NO. SEBUTHARGA : MPKP/SH(K)/12/2026

BERTARIKH 17 MEI 2026

SMART POLE DESIGN



MAJLIS PERBANDARAN KUBANG PASU, KEDAH
PROJECT BRIEF

NO. SEBUTHARGA : MPKP/SH(K)/12/2026

BERTARIKH 17 MEI 2026

LAMPIRAN

1. LOKASI TAPAK SMART POLE CCTV

- BANDAR DARULAMAN JAYA

2. LOKASI TAPAK CCTV

- AYER HITAM
- PEKAN NAPOH
- BULATAN PEKAN JITRA
- SIMPANG EMPAT TAMAN TENGGU MAHERAN
- SIMPANG TIGA MASJID TANJUNG PAUH
- SIMPANG EMPAT KOLEJ HEIGHT UTARA

MAJLIS PERBANDARAN KUBANG PASU, KEDAH
PROJECT BRIEF

NO. SEBUTHARGA : MPKP/SH(K)/12/2026

BERTARIKH 17 MEI 2026

3. BILIK KAWALAN BANDAR PINTAR MAJLIS PERBANDARAN KUBANG PASU.



MAJLIS PERBANDARAN KUBANG PASU, KEDAH
PROJECT BRIEF

NO. SEBUTHARGA : MPKP/SH(K)/12/2026

BERTARIKH 17 MEI 2026

**4. LAYOUT TAPAK UNTUK MEMBEKAL, MEMASANG, MENTAULIAH GUNA SISTEM DAN
SKRIN BILIK KAWALAN BANDAR PINTAR**

Lokasi Tapak :

Majlis Perbandaran Kubang Pasu, 06000, Jitra, Kedah. (N6.300384, E100.421843)



Petunjuk:



**Kawasan dalaman Majlis
Perbandaran Kubang Pasu .
ARAS 2.**

MAJLIS PERBANDARAN KUBANG PASU, KEDAH
PROJECT BRIEF

NO. SEBUTHARGA : MPKP/SH(K)/12/2026


BERTARIKH 17 MEI 2026

5. LAYOUT TAPAK UNTUK PEMBANGUNAN SMART POLE

Lokasi Tapak :

Bandar Darulaman Jaya, Jitra, Kedah. (N6.242561, E100.419887)



Petunjuk:	
	Kawasan lokasi smart pole

MAJLIS PERBANDARAN KUBANG PASU, KEDAH
PROJECT BRIEF

NO. SEBUTHARGA : MPKP/SH(K)/12/2026

BERTARIKH 17 MEI 2026

6 LAYOUT TAPAK UNTUK PEMASANGAN CCTV

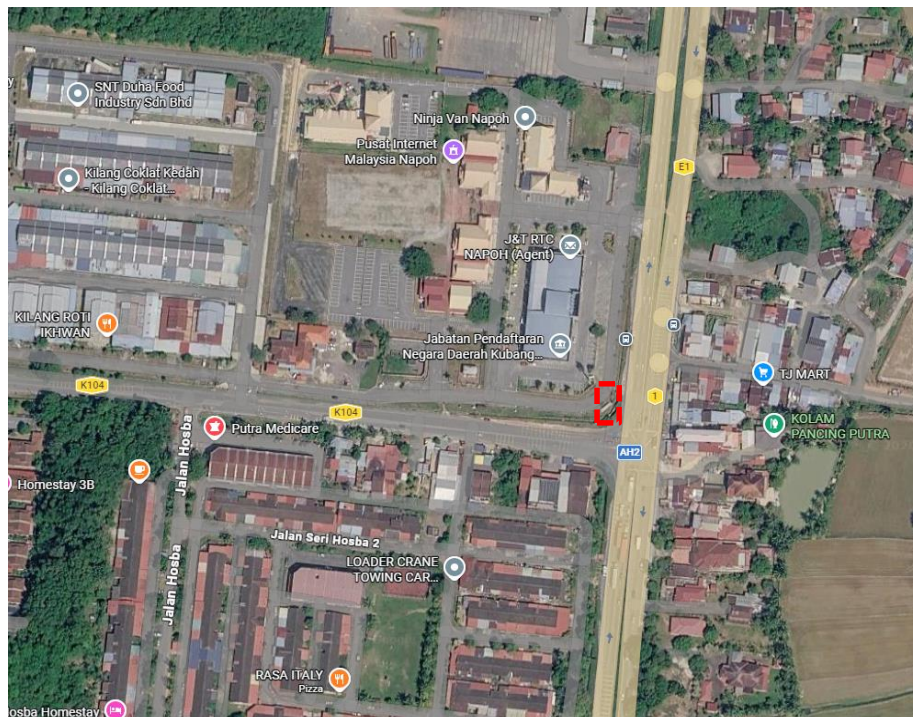
Lokasi Tapak :

Ayer Hitam, Kedah (N6.236764, E100.248725)



Lokasi Tapak :

Pekan Napoh, Kedah. (N6.361616, E100.422426)



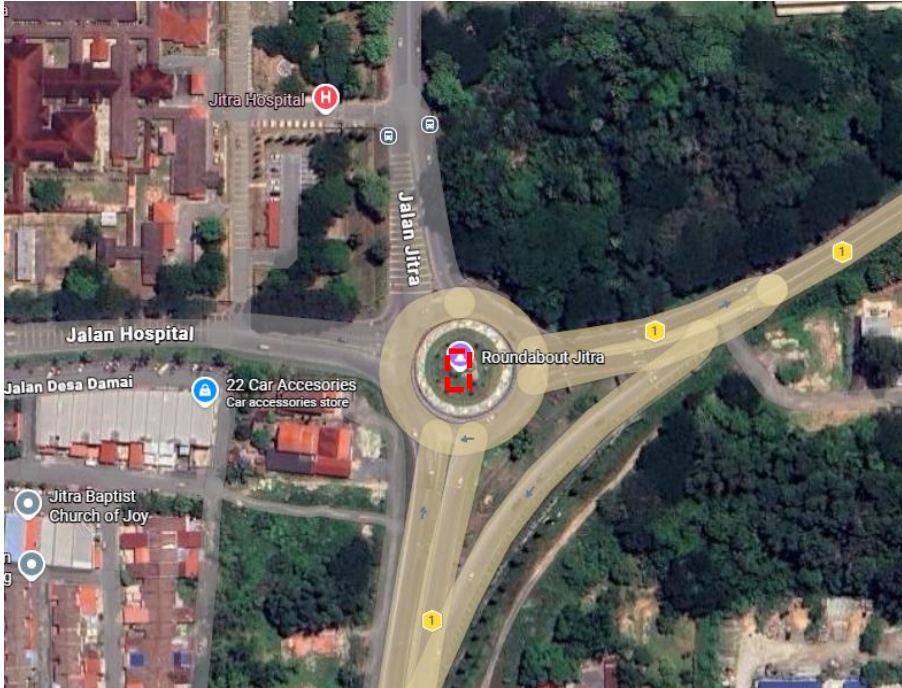
MAJLIS PERBANDARAN KUBANG PASU, KEDAH
PROJECT BRIEF

NO. SEBUTHARGA : MPKP/SH(K)/12/2026

BERTARIKH 17 MEI 2026

Lokasi Tapak :

Bulatan Jitra, Kedah. (N6.277705, E100.420403)



Lokasi Tapak :

Simpan empat Taman Tengku Maheran, Kedah. (N6.238240, E100.419885)



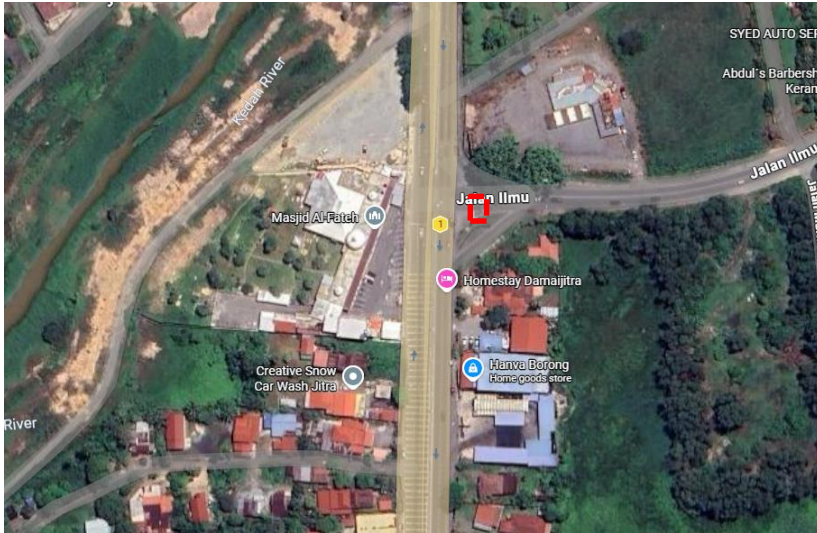
MAJLIS PERBANDARAN KUBANG PASU, KEDAH
PROJECT BRIEF

NO. SEBUTHARGA : MPKP/SH(K)/12/2026

BERTARIKH 17 MEI 2026

Lokasi Tapak :

Simpang Tiga Masjid Tanjung Pauh, Kedah. (N6.250049, E100.419976)



Lokasi Tapak :

Simpang Empat Kolej Height, Kedah. (N6.232271, E100.419797)



Petunjuk:



**Kawasan
lokasi CCTV**